



Safety Beds for Special Needs and Disabled



**Everyone sleeps better with a
BBG bed in the house**

Pediatric * Teen * Adult * Geriatric



The Beds by George Story

I am asked all the time what made me design a bed like this. My story is similar to so many of you. Sleeping safely was a real issue for my beautiful special needs daughter who was about to outgrow her crib and we needed to find a safe bed that would last her for years to come.

I'm a dad who was just trying to do what I could to help my daughter. Our daughter has micro-cephaly, low muscle tone especially in the trunk, suffers from night time seizures, and global delays. She displays some aspects of Aspergers or High Functioning Autism but ultimately she was diagnosed with 1p36 Deletion Syndrome.

Unfortunately that meant she fell out of bed easily, was really too big for the consumer side rails, would get trapped or tangled in most traditional safety devices, and with her night time seizures we needed to be able to get to her quickly. She needed additional safety but we didn't want her in a cage, and it had to be easy to operate.

We looked all over and we found options, just not good enough ones for my little girl.

Once I began to think about what I really needed, I ended up adding a few more features that I wanted. For my precious little girl, I wanted a bed that looked like it belonged in a little girl's room. I didn't want something that looked like a hospital bed or a cage from a zoo. As a parent I needed it to be easy to operate. I wanted it to be regular twin size so she probably wouldn't outgrow it and so we could use regular sheets. I also needed it to be strong enough to withstand her pulling on the sides for leverage as well as a reinforced chassis since she doesn't just lie still while in bed.

I tried lots of designs and invested a lot of time trying ideas that failed. Even my final design had some annoying features that I went back and corrected -- improvements that I have incorporated in the current Beds By George models. Over the years we have expanded into multiple sizes and features to serve a broader range of needs, because no single solution fits everyone.

I didn't do this to start a business. The business came because therapists were asking me to build beds for their clients and eventually that became my full time job in 2007.

My daughter is not a child any longer, but she still sleeps in her BBG bed. Perhaps one will help your family also. Thank you for considering Beds by George.

Sincerely,

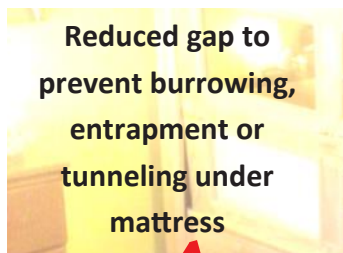
Aaron

PS: Who is "George"? He is my grandfather; who could build anything, who pulled himself out of poverty to provide for his family and others, and who had a drive and strength to never accept mediocrity. His inspiration drives us every day.

Beds by George Builds Better Beds !

Safe

Beds by George beds are among the safest beds on the market addressing fall protection, entrapment protection, and exceeding the safety standards from the FDA, CPSC, UL, CSA, CARB, and GUDID. We also offer multiple clinical features to create the best and safest possible sleeping environment.



Strong

- Amish handcrafted
- Impact resistant door panels
- Mattress: pressure relieving foam, water resistant, anti -bacterial, low shear cover
- Bunkie board rated at 300 pounds or more
- Solid wooden construction, no plastic edging or trim
- 4x4 solid wood corner posts for stability and strength
- Doors fully open along entire side and store out of the way
- Latching doors
- FDA approved
- UL and CSA approved
- 5 year limited warranty on frame

Simple

All of our doors can be operated easily with only ONE hand. One of our trademark features is our bifold dual door for high side beds. There are no doors to remove and minimizes the risk of doors being opened improperly. Simply better for everyone.

Rigid Side Safety Beds

Slumber Series Basic Safety

Std Side Door System



Hi Side Door System



Dream Series Personalized Safety



- Doors 20" above mattress
- Mattress height 24", 30" or variable
- Includes doors on front and back

- Doors 32" above mattress
- Mattress height 24", 30" or variable
- Back door optional
- **Trademark bifold door system**

Slumber vs Dream Comparison

	Slumber	Dream
wood construction	plywood and solid	all solid
# of panels per door	2	3
door visibility	472 sq inches	780 sq inches
panel types	clear	clear, airflow, solid
low chem environment	moderate	ultra low
wood colors	natural	6 colors
headboard profile	straight	3 choices
accent carvings	no	3 choices
optional "rounded" posts	no	yes
engravings	no	yes

Rigid Side Options



IV poles and wood brackets to match



Access Ports for medical tubing



Casters for ease of moving bed



Windows in headboard or footboard

Padded Interior



Optional Padding around Windows



Transparent vinyl over Clear View panels

Mesh over Air Flow panels

Sensory Reducing Clear View Panels



The tint reduces light 65% inside the bed to help create a calmer sensory space in which to sleep. This can be retrofitted to existing beds.



Rigid Side Options: DREAM SERIES

Build Your Own Door Panel Configuration

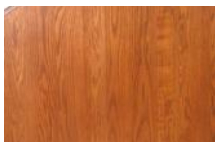


Clinical advantages to solid wood construction

All Dream Series beds are constructed of true solid wood, no plastic edges nor veneers. That difference gives you:

- Low chemical environment
- Greater durability
- Stile and rail design for strength and impacted less by humidity changes
- Greater visibility through larger panels

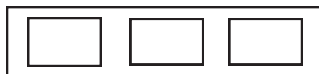
Solid Oak



Solid Maple



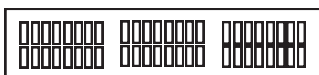
Common Configurations



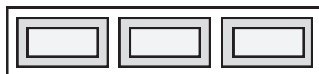
Clear View windows



Clear View windows + Air Flow panel



All Air Flow panel



Solid panel

Headboard Profiles



Hemisphere



Straight



Colonial

Pictures are for reference only. Color representation will vary by printing process and by wood has natural color variation. Options and features may change without notice.

Rigid Side Options: DREAM SERIES

Turned Finial

"Rounded" Corner Posts

Accent Carvings



Chantilly



Serenity



Soothing Wave



Engraving



Drawers

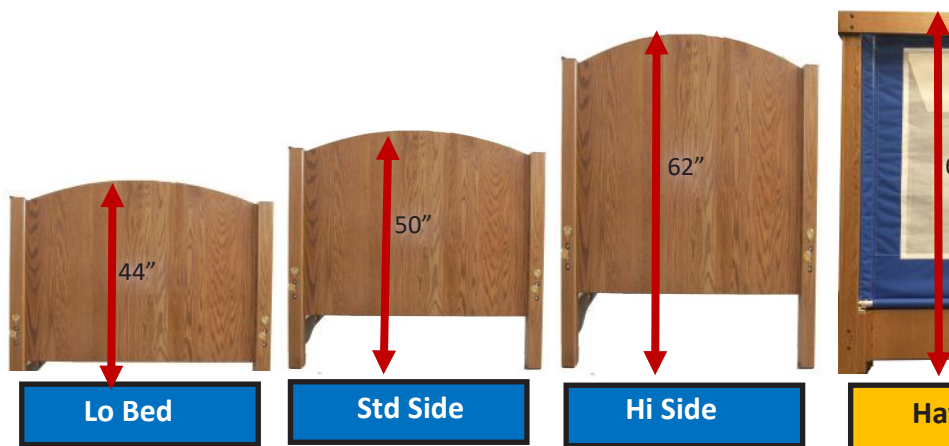
Designed for easy access and storage of your medical supplies



Photo Gallery



Many safety height choices



Safety door/panel above mattress

- Fixed
- Manual articulating head
- Manual articulation head and foot
- Semi electric (motorized articulation, manual hi lo)
- Electric (motorized articulation and hi lo)

Lo bed	Std Side	Hi Side	Hi Side w canopy	
15	20	32	47	
15	20	32	47	
15	20	32	47	
15-5	20-10	38-28	48.5-38.5	
19.5-5.5	33-16	45-29	55.5-41.5	

Mattress height

- Fixed
- Manual articulating head
- Manual articulation head and foot
- Semi electric (motorized articulation, manual hi lo)
- Electric (motorized articulation and hi lo)

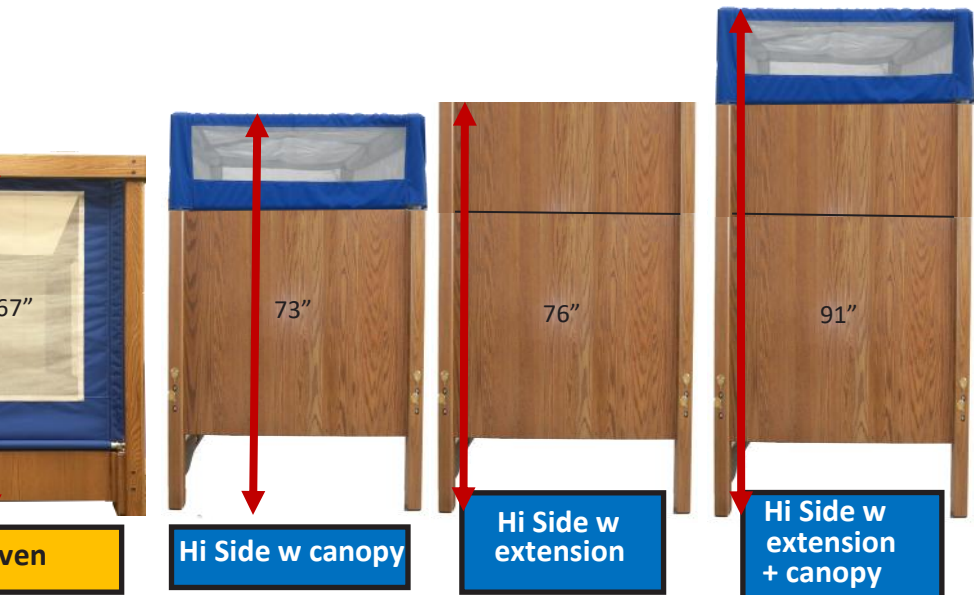
21.5	25	23	23	14, 1
21.5	25	23	23	14, 1
21.5	19 or 24.5	19 or 24.5	19 or 24.5	14, 1
21.5-31.5	24-34	24-34	24-34	
17-31	17-31	17-31	17-31	

Transfer height

- Fixed
- Manual articulating head
- Manual articulation head and foot
- Semi electric (motorized articulation, manual hi lo)
- Electric (motorized articulation and hi lo)

21.5	23.5	23.5	23.5	9, 1
21.5	23.5	23.5	23.5	9, 1
21.5	23.5	23.5	23.5	9, 1
21.5	23.5	23.5	23.5	
21.5	23.5	23.5	23.5	

Mattress sizes available: twin 36x76, extended twin 36x80, full size 54x74 (no



Haven	Hi Side with extension	Hi Side extension + canopy
50	50	65
50	50	65
50	50	65
x	52-42	67-57
x	59-45	74-60

7, 21 or 24	23	23
7, 21 or 24	23	23
7, 21 or 24	19 or 24.5	19 or 24.5
x	24-34	24-34
x	17-31	17-31

2, 16 or 19	23.5	23.5
2, 16 or 19	23.5	23.5
2, 16 or 19	23.5	23.5
x	23.5	23.5
x	23.5	23.5

on electric models only)

Outside bed dimensions

Rigid	reg	w/ pads
36 x 76	41 x 83.25	42.5 x 83.25
36 x 80	41 x 87.25	42.5 x 87.25
54 x 74	58.25 x 81.25	59.75 x 81.25

Haven	
36 x 76	42.75 x 82.75
36 x 80	42.75 x 86.75



Many models
available in
30" transfer
heights

***Note: feet levelers raise all beds 1/2 - 1"**

Rigid Side Option: Full Mesh Enclosure

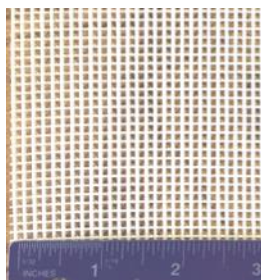


“Canopy”

When high sides aren't enough, consider adding a mesh safety enclosure on the top of the bed. Non stretchable mesh with coated fabric trim is stretched over a strong tubular aluminum frame and firmly bolted to our corner posts. Fabric can be removed and machine washed. Choose from several fabric colors. This is one of our most commonly requested add-ons.

- Can be added to all Slumber or Dream Series beds
- Fabric covering is **removable** and **washable**
- Fabric can be tightened without disassembling the bed
- Padded sleeves cover metal frame
- Adds 15 inches interior height
- The unit is mesh with fabric reinforcement stretched over a heavy duty tubular aluminum frame
- Medicaid and FDA approved
- Available with heavy duty mesh
- When paired with a Hi Side bed, this is the most versatile and durable safety bed

Standard



Heavy Duty (HD)



2 Mesh Options

HD Mesh option provides

- ◇ More fabric reinforcements
- ◇ Greater strength
- ◇ More airflow

Note: larger holes (1/4" dia) may not be suitable for tiny fingers

The **HAVEN Bed** (fully enclosed mesh side and top)

The HAVEN bed expands our product offering to provide a **softer side** than our rigid side beds while maintaining a safe sleeping environment.

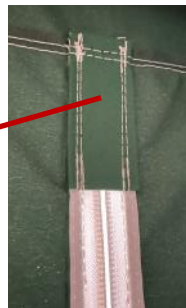
This is a complete unit, the enclosure cannot be added to another bed.



- Fabric covering is **removable** and **washable**
- Transfer height as low as 14 inches for fixed deck only
- Available decks: fixed, manual adjust
- Structure: mesh and fabric stretched over a heavy duty tubular aluminum frame, reinforced with wood shroud
- Padded sleeves cover metal frame
- Option to add doors to head, foot, or back
- Fabric can be tightened without disassembling the bed
- IV Pole, access ports, casters available
- Approximately 50 inches interior height
- Mesh is white, fabric border comes in several colors
- Fabric has moisture resistant coating for easy cleaning
- Mattress sizes: 36x76, 36x80, 54x74
- Medicaid and FDA approved

Zipper Security

To keep little fingers from opening zipper from inside we have a security pocket sewn in to prevent access to the zipper slide.



Haven Options: Sensory Curtains

Reduce Sensory Input



Curtains velcro at the bottom



Curtain can be rolled and secured when not in use



Add a Sensory Curtain that covers mesh on all 4 sides. Curtain is sewn at the top. Cannot be retrofit to existing canopies.

Haven Options: Exterior Padding



For increased safety for bed entrance and egress, you can pad the exterior of the wooden frame.

The system includes 360 degree padding around the exterior of the lower wooden frame as well as covering the 4 vertical shroud components. There are many fabric colors to pick from. This particular feature can be added at a later time.

Haven Options: Clear View Top

* Camera not provided. Lighting, camera, and camera position affects the image.



View with common nanny cam

DAYTIME



NIGHT TIME



* yes we used a wreath to show visible details

Haven Options: Multiple Doors



One side door is always included, but you can add additional doors for clinical access to 2, 3 or 4 sides for the best possible accessibility for every room configuration, medical condition, or situation.

NOTE: access ports cannot be placed on same side as door

Haven Options: Access Port

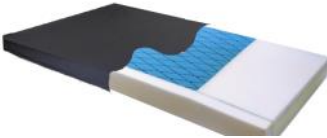
When any kind of tubing is needed (feeding, oxygen, etc) you will want to add access port(s) to the head and/or foot.



Mattress Choices



ALL MATTRESSES HAVE stretch nylon mattress cover to reduce perspiration and provides a low shear/friction surface that is anti-microbial/anti-bacterial and fluid resistant.



STANDARD: Multi-tiered foam mattress sections offers excellent pressure redistribution for mid to high risk patients.

Mattresses below require additional clinical justification and cost



GEL INFUSED FOAM: increased pressure redistribution over standard mattress plus rapid heat dissipation.



ALTERNATING PRESSURE LOW AIR LOSS: Active combination therapy system designed to prevent, treat and heal pressure ulcers in the home or long term care setting. Ext Twin size only.

Mattress Hold Down

All the mattresses in our beds are designed to fit snugly within the rigid frame. But for certain patients, an additional mattress hold down modification is available to help minimize burrowing behavior.



Fabric colors for pads, Haven bed, and canopy.
Fabric is machine washable and water repellent.



White



Camo



Royal



Pink



Red



Black



Grape



Beige



Navy



Green



Silver



Ivory

Stain Color Choices

Colors in this document are approximations; we do not guarantee color accuracy from printed or electronic images. Options and features may change without notice.



Natural



Fruitwood



Michaels Cherry

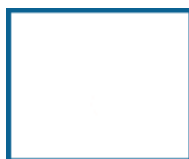


Asbury

Paint Color Choices



Rosewood



White



Pewter



Black

Bed Deck Options

- Twin 36 x 76
- Ext Twin 36 x 80
- Full 54 x 74

For ALL models

1



1. Fixed deck, fixed height bunkie board ● ● ●

2



2. Manual adjustable head, fixed height bunkie board ● ● ●

3. Manual adjustable head, foot and height - "Dual deck" ● ●

4. Electric adjustable head and foot, manual height - "Semi electric" ●

5. Electric adjustable head, foot, and height - "Full electric" ● ●

3



For Dream and Slumber

4



5



Beds by George Builds Better Beds

Guillermo from California said, "It is gorgeous and doesn't have the institutional look...it looks, feels, and is solid. Thank you. I just can't stop looking at it. It is a work of art!"

Kathy from Maine said, "This is exactly what we have been looking for!"

Maria from Michigan said, "It is beyond what we even expected"

Annabelle from Ohio said, "This is so beautiful"

Cindy from Indiana said, "The bed is working great! It is so sturdy...we could do an infomercial"

** we reserve the right to change specs without notice*

www.bedsbygeorge.com



Beds by George®

219 Caravan Drive, Elkhart, IN 46514

Phone 574-333-2310

Email: info@bedsbygeorge.com

www.bedsbygeorge.com

Proudly made in the USA